

Howard Morley  
& Sons



PCM

**£5,500 PCM**

**White House Mews**

Jacobs Well, GU4 7GD

## PROPERTY SUMMARY

An handsome four double bedroom, four bathroom home finished to an executive specification.

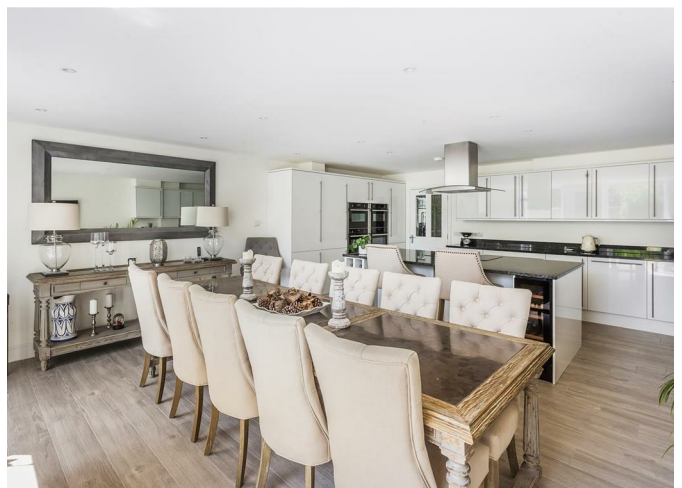
4



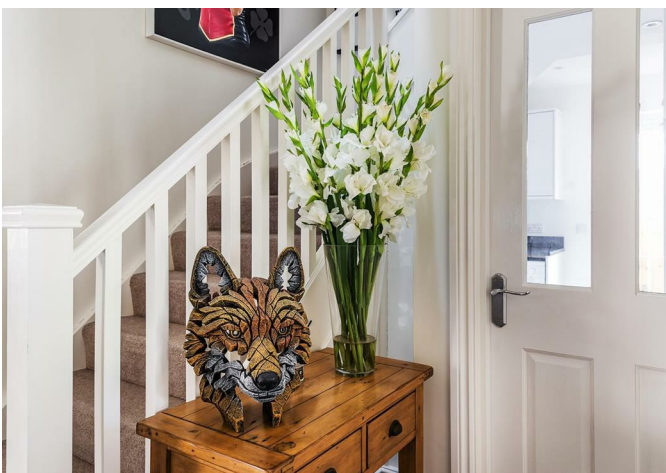
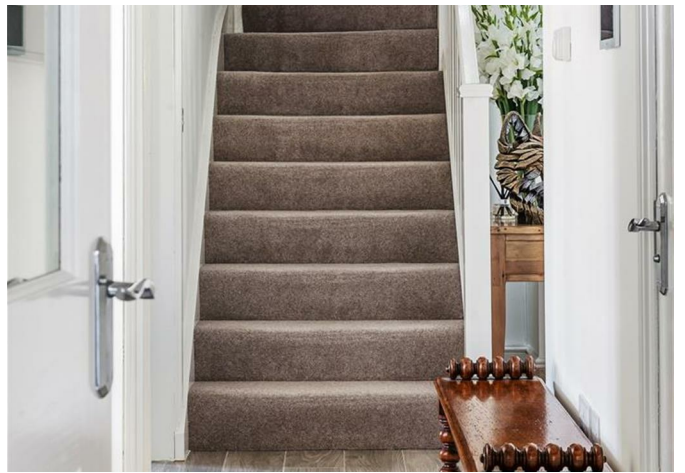
4



3











4 |

4 |

3 |

Energy Efficiency Rating		
	Current	Potential
Very energy efficient - lower running costs		
(92 plus) <b>A</b>		<b>100</b>
(81-91) <b>B</b>	<b>90</b>	
(69-80) <b>C</b>		
(55-68) <b>D</b>		
(39-54) <b>E</b>		
(21-38) <b>F</b>		
(1-20) <b>G</b>		
Not energy efficient - higher running costs		
<b>England &amp; Wales</b>	EU Directive 2002/91/EC	

Agents Note: Whilst every care has been taken to prepare these particulars, they are for guidance purposes only. All measurements are approximate and are for general guidance purposes only and whilst every care has been taken to ensure their accuracy, they should not be relied upon and potential buyers/tenants are advised to recheck the measurements

	<b>OFFICE ADDRESS</b> 276 High Street Guildford Surrey GU1 3JL	<b>OFFICE DETAILS</b> 01483 575 304 lettings@hmorley.co.uk hmorley.co.uk
--	--	---